



# COFDM IPM2 L-Band IP Bridge

## Outdoor Unit Mounting Instructions

### Application Note

April 2017

**IPM2 ODU Mounting Instructions  
Application Note**

**History**

DATE	DOCUMENT REVISION	DESCRIPTION
02-2015	ARF AP-ODU Mounting-1V0	Original document first release
04-2017	ARF AP-ODU Mounting-1V1	Updates and corrections

**Overview**

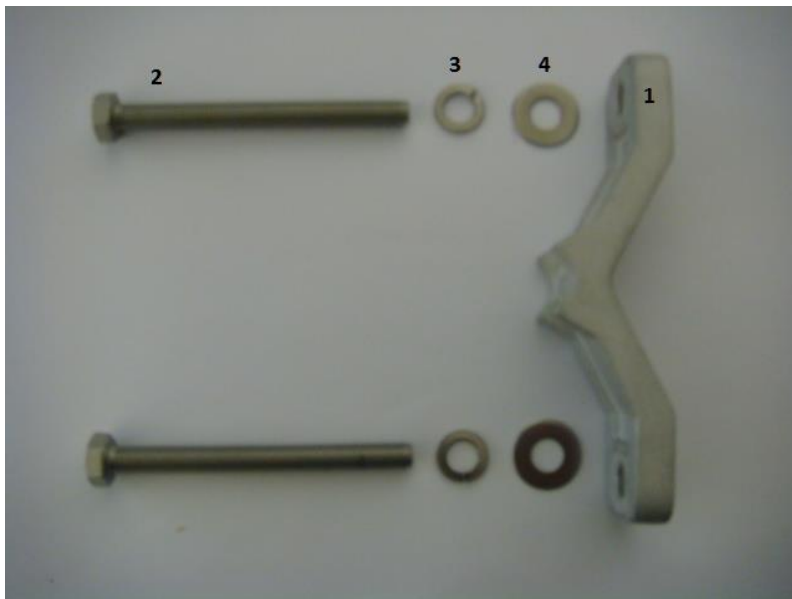
This document provides instructions for mounting the IPM2P Outdoor Unit using the supplied universal pole mount bracket kit, mounting to a flat plate, fitting of an Earth bonding strap and using the antenna connection.

**Universal Pole Mount Bracket**

The supplied pole mount bracket is suitable for mounting the IPM2P ODU to metal poles with a diameter between 20mm and 60mm.

**Parts List**

The IPM2P Outdoor Unit (ODU) pole mount bracket kit consists of the following parts:



This kit comprises the following parts;

1. 1 OFF Cast Aluminium Reversible Clamp
2. 2 OFF M8 x 80mm Stainless Hex Bolts
3. 2 OFF M8 Stainless Spring Washers
4. 2 OFF M8 Stainless Plain Washers

**Tools Required**

1. Spanner 13mm AF

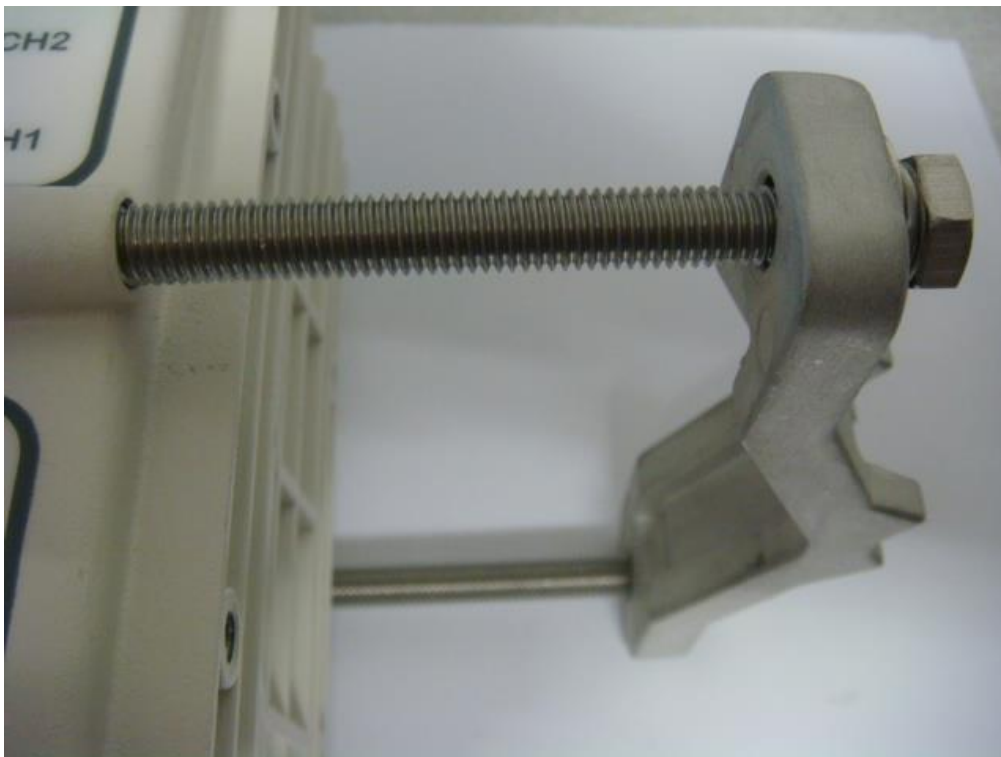
---

## IPM2 ODU Mounting Instructions Application Note

---

### Large Diameter Poles

Using the universal pole mount kit, the ODU can be mounted to Poles with a diameter of between 40mm and 60mm by assembling the clamp as shown below:



### Small Diameter Poles

Smaller diameter poles with diameters between 20mm and 35mm can be accommodated by reversing the clamp as shown below.

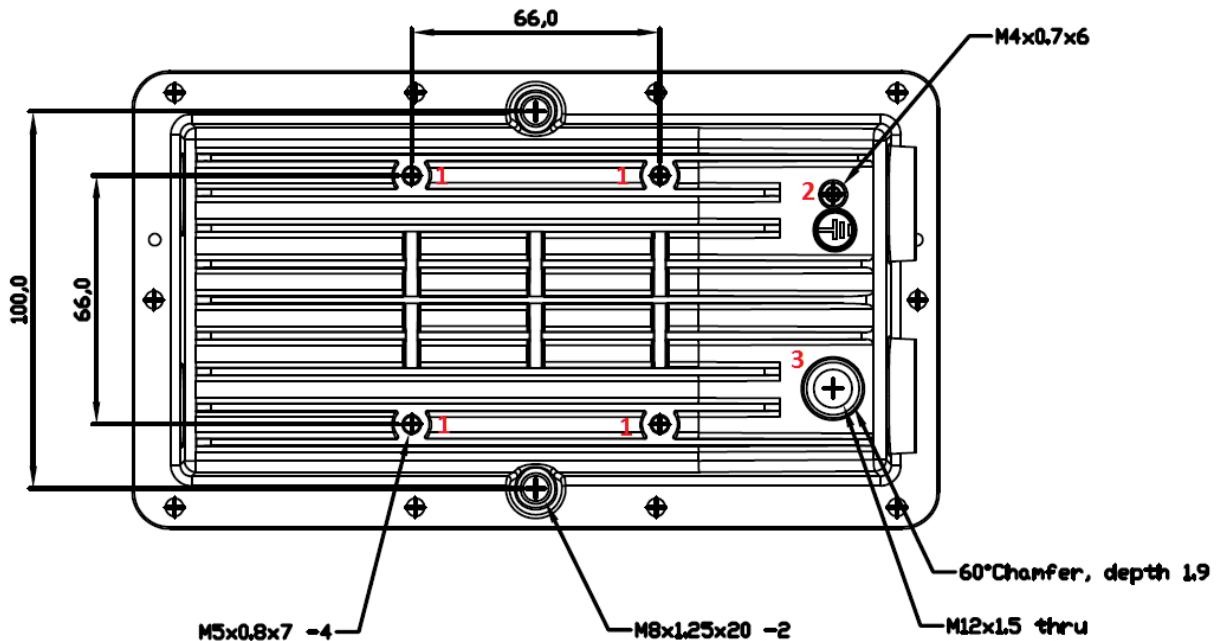


Other pole diameters can also be accommodated by replacing the supplied bolts (2) with other bolts with suitable lengths.

**IPM2 ODU Mounting Instructions  
Application Note**

**Mounting to a Flat Surface**

In addition to mounting to a pole, the ODU has 4 off M5 threaded fixing holes (1) for mounting to a flat surface via a wall plate. Hole locations (1) and dimensions are shown below.



Please take care to ensure that when using a mounting plate, enough clearance is provided for the breather vent (3) and Earth bonding point (2), which are raised above the fixing holes (1).

**Earth Bonding**

The ODU chassis can be bonded to the installation Earth via the Earth bonding point on the underside of the unit.

This requires the use of a suitable Earth strap together with an M4 x 8mm screw and washer.



---

## IPM2 ODU Mounting Instructions Application Note

---

### Antenna Connection

The ODU has an 'N' type female antenna connector which is suitable for connection of suitable antennas either directly, or via a suitable low loss RF cable, depending on the application.

### Direct Mount Antenna



This is a basic weather proofed dipole antenna (ANTD-1394-N-OD) supplied by the factory. This is suitable for direct connection to the 'N' type connection of the ODU..



**NOTE:** This antenna should be fitted to the antenna connector of the ODU before powering on the unit.